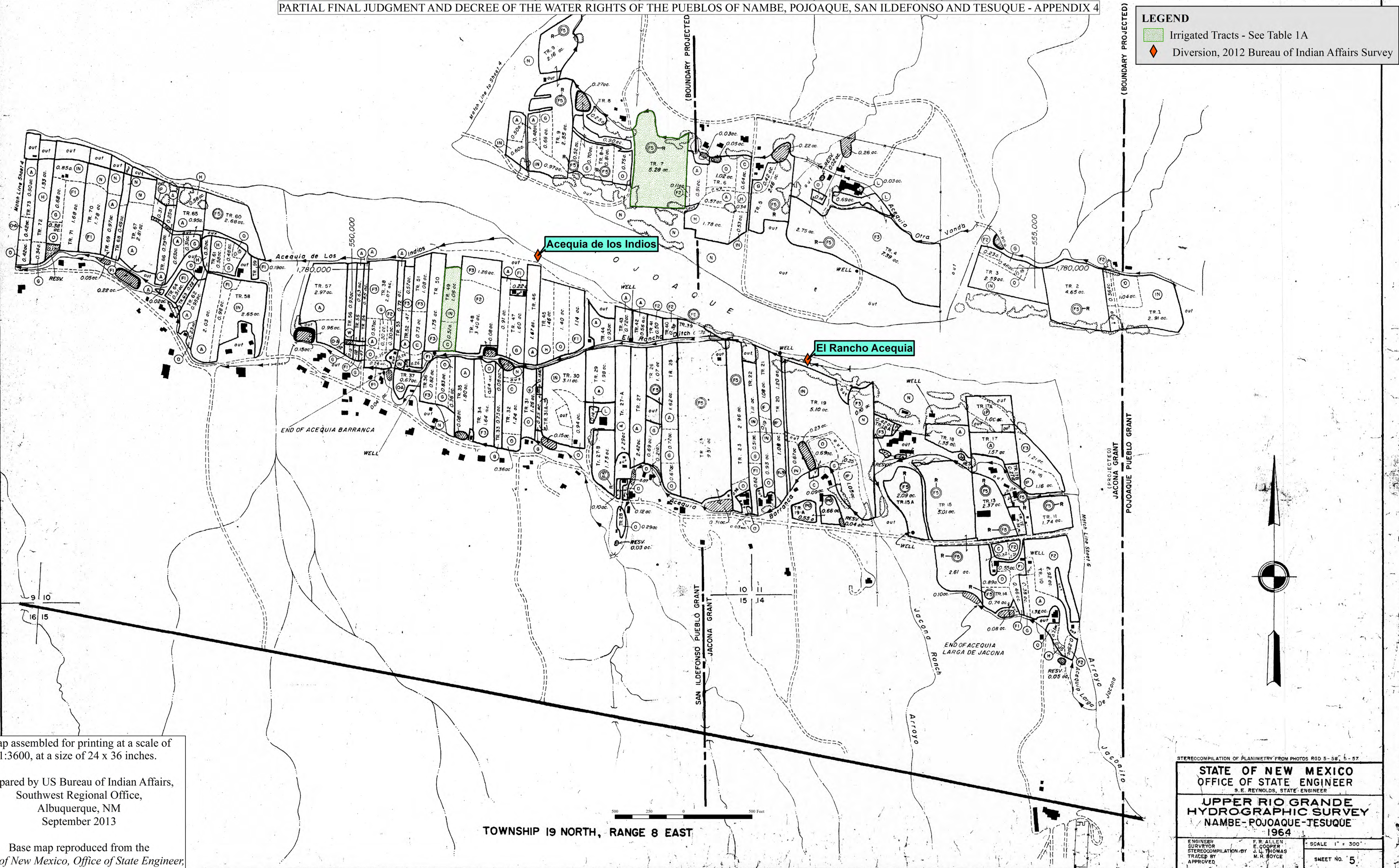


# APPENDIX 4 - FIGURE 5 - Pueblo de San Ildefonso Irrigated Lands

PARTIAL FINAL JUDGMENT AND DECREE OF THE WATER RIGHTS OF THE PUEBLOS OF NAMBE, POJOAQUE, SAN ILDEFONSO AND TESUQUE - APPENDIX 4



**LEGEND**

- Irrigated Tracts - See Table 1A
- Diversion, 2012 Bureau of Indian Affairs Survey

Map assembled for printing at a scale of 1:3600, at a size of 24 x 36 inches.  
 Prepared by US Bureau of Indian Affairs,  
 Southwest Regional Office,  
 Albuquerque, NM  
 September 2013

Base map reproduced from the  
 State of New Mexico, Office of State Engineer,  
 Upper Rio Grande Hydrographic Survey,  
 Nambé - Pojoaque - Tesuque, 1964.

STEREOCOPIATION OF PLANIMETRY FROM PHOTOS RGD 5-58, 5-57

**STATE OF NEW MEXICO**  
 OFFICE OF STATE ENGINEER  
 S. E. REYNOLDS, STATE ENGINEER

**UPPER RIO GRANDE**  
 HYDROGRAPHIC SURVEY  
 NAMBE-POJOAQUE-TESUQUE  
 1964

ENGINEER SURVEYOR: F. R. ALLEN, E. COOPER  
 TRACEE BY: J. L. THOMAS, M. H. BOYCE  
 APPROVED:

SCALE 1" = 300'  
 SHEET No. 5

TOWNSHIP 19 NORTH, RANGE 8 EAST